

2009 Lake Huron International Regatta

July 3rd, 2009

Hosted by the Port Huron Yacht Club



SAILING INSTRUCTIONS

1. Rules

1.1. The Race shall be governed by the “rules” as defined in the current Racing Rules of Sailing for 2009-2012 (RRS), which includes the following (except as changed by the Sailing Instructions):

- 1.1.1. The prescriptions of U.S. Sailing
- 1.1.2. This Notice and Conditions of Race (*Notice of Race*).
- 1.1.3. The Sailing Instructions and any amendments.
- 1.1.4. Applicable U.S. and Canadian Coast Guard Rules and Regulations.
- 1.1.5. Lake Huron Performance Handicap Racing Fleet (*PHRF*) rules as administered by the RC.
- 1.1.6. IRC rules and regulations as applied by the national authority.

1. NOTICES TO COMPETITORS

- 1.1. The OA will post information on the Official Notice Board located at PHYC. Competitors will be deemed to have knowledge of such information from the time it is so posted. The posted information will include assigned ratings and may include amendments to the Notice of Race and/or the Sailing Instructions.
- 1.2. Unofficial information may also be posted on the Yacht Scoring website at www.yachtscoring.org.

2. CHANGES TO SAILING INSTRUCTIONS

- 2.1. Any change to the sailing instructions will be posted before 1400 on the July 3rd, 2009.

3. SIGNALS MADE ASHORE

- 3.1. Signals made ashore will be displayed at the PHYC flagstaff. Signals may also be displayed at the Sarina Yacht Club (SYC) Race Committee Building. Note that the PHYC flagstaff takes precedence.
- 3.2. When flag AP is displayed ashore, ‘1 minute’ is replaced with ‘not less than 90 minutes’ in race signal AP.

4. SCHEDULE OF RACES

- 4.1. The scheduled time of the warning signal for the race is 1900.

5. CLASS SPLITS / STARTING ORDER

- 5.1. Final class splits and starting order will be posted at the notice board by 1400 on July 3rd, 2009. Unofficial splits may be posted on the Yacht Scoring web site.

6. THE COURSES

6.1. Port Huron 100 Course - Approximately 87 NM (100 miles)

From the start the boats will go a heading of 348T for 2.80NM to the Number 12 Channel Marker (approximately N43 05.462 W82 24.618) leaving it to starboard. Then heading 60T for 18.1NM to the Kettle Point Marker, V4 (approximately N43 14.346 W82 03.063) leaving it to port. Then will proceed on a heading of 357T for 18.3NM to the Southen Lake Huron Weather Station 45149 (approximately N43 33.000 W82 05.000) leaving it to port. Boat will then head 251T for 20.9NM to Port Sanilac Harbor rounding mark (approximately N43 25.81 W82 31.75) leaving it to port. The fleet will then proceed toward the finish at a heading of 169T for a distance of 25.7NM.

7.2 John Blunt Memorial Race - Approximately 59 NM (68 miles)

From the start the boats will go a heading of 348T for 2.8NM to the Number 12 Channel Marker (approximately N43 05.462 W82 24.618) leaving it to starboard. Then heading 60T for 18.1NM to the Kettle Point Marker, V4 (approximately N43 14.346 W82 03.063) leaving it to port. Then will proceed on a heading of 275T for 20.6NM to Lexinton Harbor Rounding Mark (approximately N43 16.02 W82 31.09) leaving it to port. The fleet will then proceed toward the finish at a heading of 164T for a distance of 16.1NM

7.3 Kettle Point Course - Approximately 43 NM (49 miles)

From the start the boats will go a heading of 339T for 1.8NM to the Number 10 Channel Marker (approximately N43 04.396 W82 24.754) leaving it to starboard. Then heading 58T for 18.7NM to the Kettle Point Marker, V4 (approximately N43 14.346 W82 03.063) leaving it to port. Next on a heading of 241T for 18.1NM to the Number 12 Channel Marker (approximately N43 05.462 W82 24.618) leaving it to port. Then proceed toward the finish at a heading of 182T for a distance of 4.9NM

6 MARKS

- 6.1 G mark – 4' diameter yellow ball marked with a black letter.
- 6.2 Channel Marker #10 – Red Channel Marker with red flashing light.
- 6.3 Channel Marker #12 – Red Channel Marker with red flashing light.
- 6.4 North Kettle Point Marker (V4) – Red Channel Mark with red flashing light.
- 6.5 Southern Lake Huron Station 45149 – Yellow 3 meter discus buoy with yellow flashing light
- 6.6 Port Sanilac Harbor Rounding Mark – White Cylinder with a yellow flashing light.
- 6.7 Lexington Harbor Rounding Mark – Yellow inflatable mark with light.
- 6.8 Channel Marker #2 – Red Channel Marker with red flashing light.

7 THE START

- 7.1 Races will be started by using rule 26 with the warning signal given 5 minutes before the starting signal.
- 7.2 The starting line will be between G mark (approximately N43 01.93 W82 23.05) to starboard and the Orange Flag displayed on the Race Committee boat to port.
- 7.3 Boats whose warning signal has not been made shall avoid the starting area.
- 7.4 The starting order will be provided at the skippers meeting.

8 THE FINISH

- 8.1 The finishing line will be between Channel Mark #2 (approximately N43 00.555 W82 24.896) to starboard and the SYC Race Committee Building on the Canadian Shore.
- 8.2 See 13.4 for finishing requirement.
- 8.3 All yachts must take their own finish time along with the yachts ahead and behind if possible. See page 3.
- 8.4 After 1300 on Saturday, Jul 4th yachts **must** take their own time and turn this into the OA. The finish crew will not be on station after this time.

9 TIME LIMIT / RETIREMENT

- 9.1 There will be no time limit for this race.
- 9.2 A yacht that retires from a race must notify the race committee as soon as possible using VHF 69, failing that, immediately after arriving by calling or text messaging to 810-650-4403.

10 PROTESTS AND REQUESTS FOR REDRESS

- 10.1 Protest forms are available at the PHYC.
- 10.2 Protests shall be delivered within the protest time limit to the Race Chairman at PHYC or Race Chairman Mailbox upstairs at PHYC.
- 10.3 The protest time limit is 2 hours after the protesting boat has finished.

11 SAFETY REGULATIONS

- 11.1 Each yacht racing, depending on country of registration, shall comply with US or Canadian Coast Guard requirements.
- 11.2 Port Huron and Sarnia Yacht Clubs strongly recommends (but does not require) that all personnel on deck wear personal flotation when starting and finishing without exception, and at all other times except when the captain of the boat directs that it may be set aside. Competitors are reminded that it is the competitor's individual responsibility for wearing personal buoyancy adequate for the conditions (RRS 1.2) and that each boat is solely responsible for deciding whether or not to start or to continue racing (RRS 4).

12 EQUIPMENT AND MEASUREMENT CHECKS

- 12.1 A boat or equipment may be inspected at any time for compliance with the class rules and sailing instructions.

13 RADIO COMMUNICATION

- 13.1 A boat shall neither make radio transmissions while racing nor receive radio communications not available to all boats. This restriction also applies to mobile telephones.
- 13.2 Race Committee may monitor and use VHF 69 to hail sail numbers of infringing yacht. Failure to do so will not be grounds for redress.
- 13.3 It is strongly recommended that all yachts monitor communication on VHF 16 and 69 while racing.
- 13.4 All yachts **must** notify the race committee on channel VHF 69 prior to finish at or near channel marker #7 (24 ft tower three miles north of finish). Yacht with radio communication problems may attempt to call the SYC Race Shack at 519.332.6779 Ext 6 during the race. Yachts that fail to complete 13.4 may be subject to Protest from the Race Committee and be subject to a penalty.

14 PRIZES

- 14.1 Flags and Trophies will be awarded to top finishes in each class.

2009 Lake Huron International Regatta Course

Port Huron 100 Course

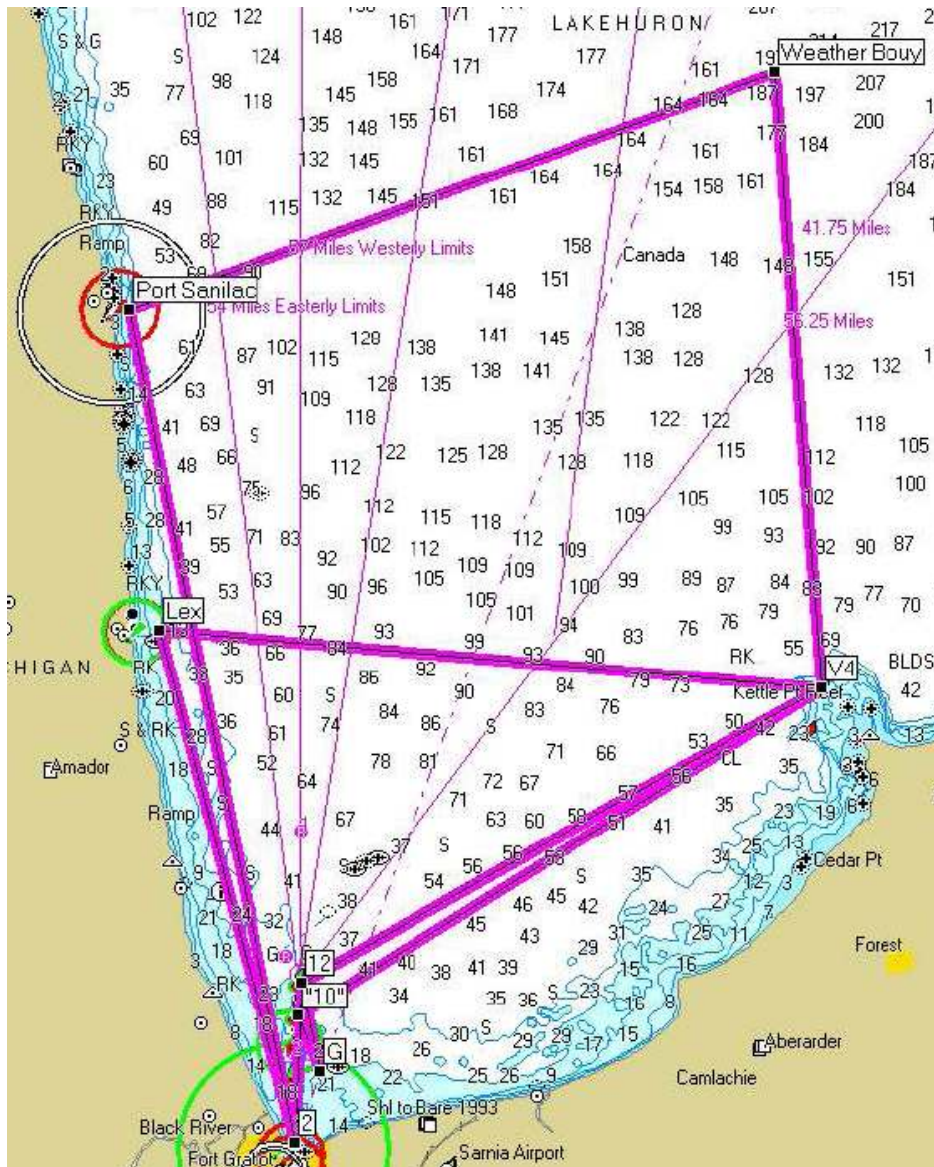
- 1st leg to #12 – 2.80NM / 348T
- 2nd leg to V4 – 18.1NM / 60T
- 3rd leg to WB – 18.7NM / 356T
- 4th leg to PS A – 20.8NM / 250T
- 5th leg to Finish – 25.7NM / 169T

John Blunt Memorial Course

- 1st leg to #12 – 2.80NM / 348T
- 2nd leg to V4 – 18.1NM / 60T
- 3rd leg to Lex – 20.6NM / 275T
- 4th leg to Finish – 16.1NM / 164T

Kettle Point Course

- 1st leg to #10 – 1.80NM / 339T
- 2nd leg to V4 – 18.7NM / 58T
- 3rd leg to #12 – 18.1NM / 241T
- 4th leg to Finish – 4.9NM / 182T



Finish Time _____
 Boat Ahead _____
 Boat Astern _____